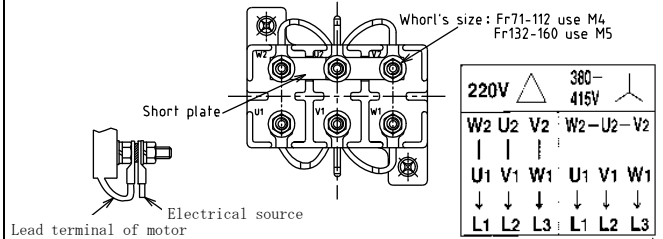


Model No : FT4-0.5HP-L

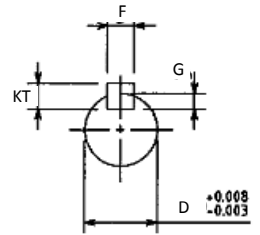
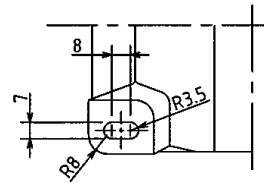
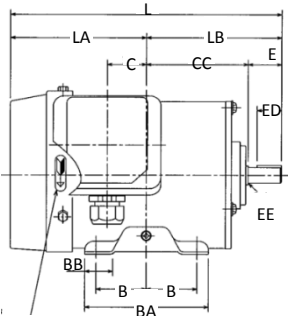
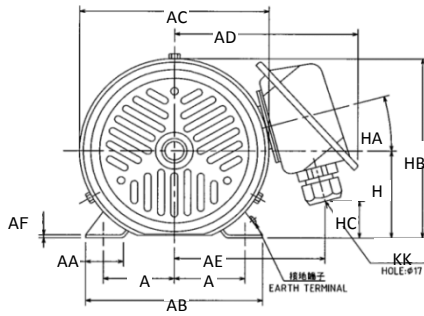
Output Power HP(kW)	0.5 (0.37)
Pole	4 Pole
Frame Number	71M
Enclosure	TEFC
Degree of Protection	IP55
Frame Material	Steel
Thermal Class	F
Time Rating	S1

CONNECTION & CONNECTION DIAGRAM



* Direct On line only

Phase	3 Phase
Voltage & Frequency	220/380/415V-50Hz
Standard	IEC 60034-1/ IEC60034-5
Lead Wire Connection	6 lead wires with terminal block
Direction of Rotation	Counter Clock Wise (CCW) viewed from Shaft end side
Ambient Temperature	-20~40°C
Ambient Humidity	100% or Less
Above Sea Level	1000m or Less
Environment	No bursting erosive gas or vapor
Coating Color	Munsell N7



Frame foot as viewed from below.

Note: Tolerance on dimensions "H", "D", and "G" to IEC 60072.

DIMENTION(mm) / WEIGHT

A	AA	AB	AC	AD	AE	AF	H	HA	HB
56	30	140	150	151	125	2.3	71	15°	146
HC	KK	B	BA	BB	C	CC	E	ED	EE
30	Φ17	45	110	25	35	90	30	22	R1.3
L	LA	LB	KT	F	G	D	Weight(kg)		
241	121	120	5	5	3	14j6	12		

CHARACTERISTICS AND PERFORMANCE

Noise SPL measured at Less than 1kW: 0.5m

Rated Output HP (kW)	Frame Number	Hz	Volts	Full Load Current A	Full Load Speed min ⁻¹	No Load Current A	Locked Rotor Current % F/L	Locked Rotor Torque % F/L	Pull Up Torque % F/L	Break down Torque % F/L	Efficiency (%)			Power factor			Rotor Inertia J kg·m ²	Noise SPL dB(A)
											Full Load	75% Load	50% Load	Full Load	75% Load	50% Load		
0.5 (0.37)	71M	50	220	1.65	1400	1.94	530	290	275	300	71.0	70.0	66.5	71.0	61.0	48.0	0.00120	50
			380	0.95	1400	1.12	530	290	275	300	71.0	70.0	66.5	71.0	61.0	48.0		
			415	0.92	1410	1.22	560	345	325	355	71.5	70.0	64.0	62.0	52.0	40.0		

These characteristics are designed for Direct on-line connection.

All data subject to change without any notice